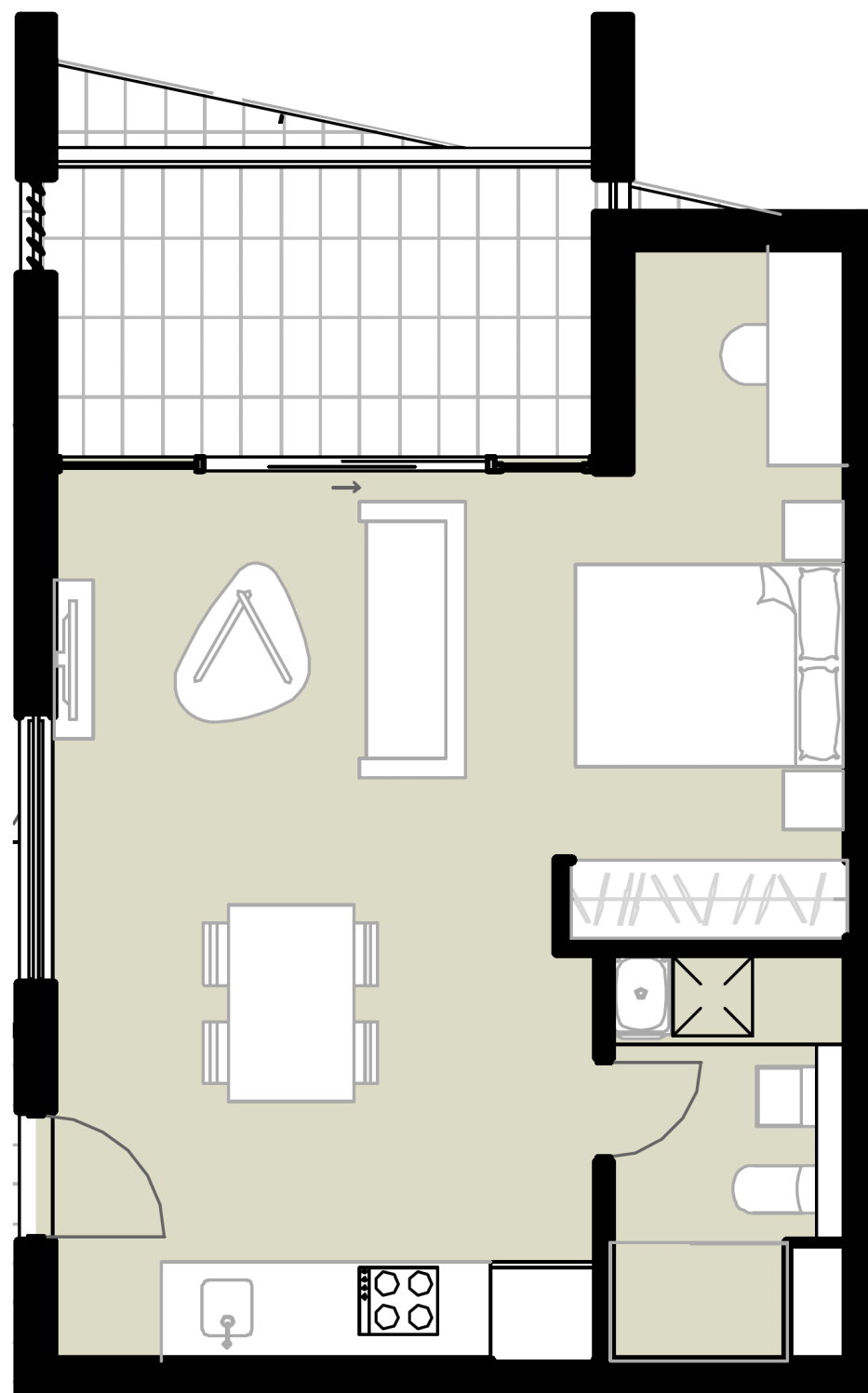


# Studio

Min Price	Max Price
\$396,000	\$431,000



Melrose Park  
**VILLAGE**  
BY SEKISUI HOUSE

STUDIO

1

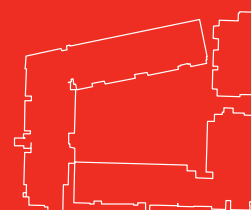
BATHROOM

1

CAR SPACES

0

INTERNAL AREA	44m <sup>2</sup>
EXTERNAL AREA	9m <sup>2</sup>
TOTAL AREA	53m <sup>2</sup>



LIVE WELL AT THE VILLAGE - MELROSE PARK.COM.AU



Disclaimer: These plans are intended as a guide only. The dimensions and areas are approximate only and may not accurately represent the actual dimensions and areas of the residences/car spaces or the spaces within them and are subject to change without notice. In addition, locations of utilities may vary during construction and fittings and fixtures on these plans are for illustrative purposes only. The areas are generally measured in accordance with the Property Council of Australia method of measurement. Prospective purchasers must rely on their own enquiries and should refer to the Contract of Sale and its schedules for all matters to be included in the purchase price of the residences, including plans, finishes, fixtures, fittings, appliances and other particulars of sale. Loose furniture and planters are not included. Extent of floor finishes may vary. External space and landscaping indicative only. Refer to contract elevations and plans for further clarification.

# 1 Bedroom

Min Price	Max Price
\$589,000	\$630,000



Melrose Park  
**VILLAGE**  
BY SEKISUI HOUSE

BEDROOM

1

BATHROOM

1

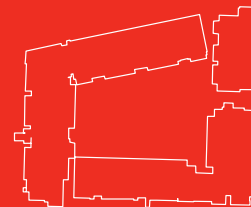
CAR SPACES

1

INTERNAL AREA 56m<sup>2</sup>

EXTERNAL AREA 10m<sup>2</sup>

TOTAL AREA 66m<sup>2</sup>



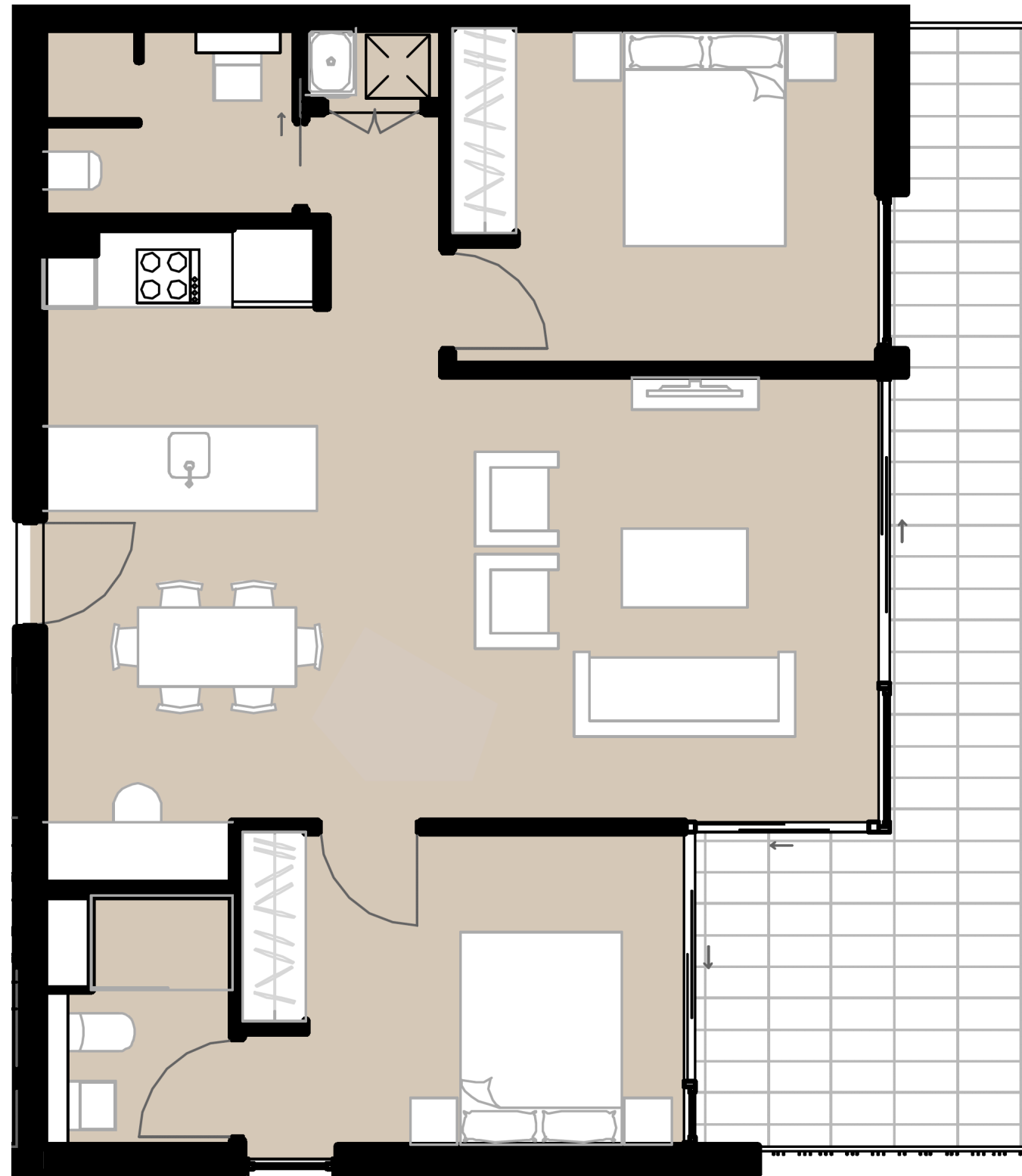
LIVE WELL AT THE VILLAGE - MELROSE PARK.COM.AU



Disclaimer: These plans are intended as a guide only. The dimensions and areas are approximate only and may not accurately represent the actual dimensions and areas of the residences/car spaces or the spaces within them and are subject to change without notice. In addition, locations of utilities may vary during construction and fittings and fixtures on these plans are for illustrative purposes only. The areas are generally measured in accordance with the Property Council of Australia method of measurement. Prospective purchasers must rely on their own enquiries and should refer to the Contract of Sale and its schedules for all matters to be included in the purchase price of the residences, including plans, finishes, fixtures, fittings, appliances and other particulars of sale. Loose furniture and planters are not included. Extent of floor finishes may vary. External space and landscaping indicative only. Refer to contract elevations and plans for further clarification.

# 2 Bedroom Type 1

Min Price	Max Price
\$733,000	\$805,000



Melrose Park  
**VILLAGE**

BY SEKISUI HOUSE

BEDROOM

2

BATHROOM

2

CAR SPACES

1

INTERNAL AREA

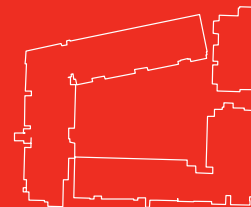
78m<sup>2</sup>

EXTERNAL AREA

20m<sup>2</sup>

TOTAL AREA

98m<sup>2</sup>



LIVE WELL AT THE VILLAGE - MELROSE PARK.COM.AU

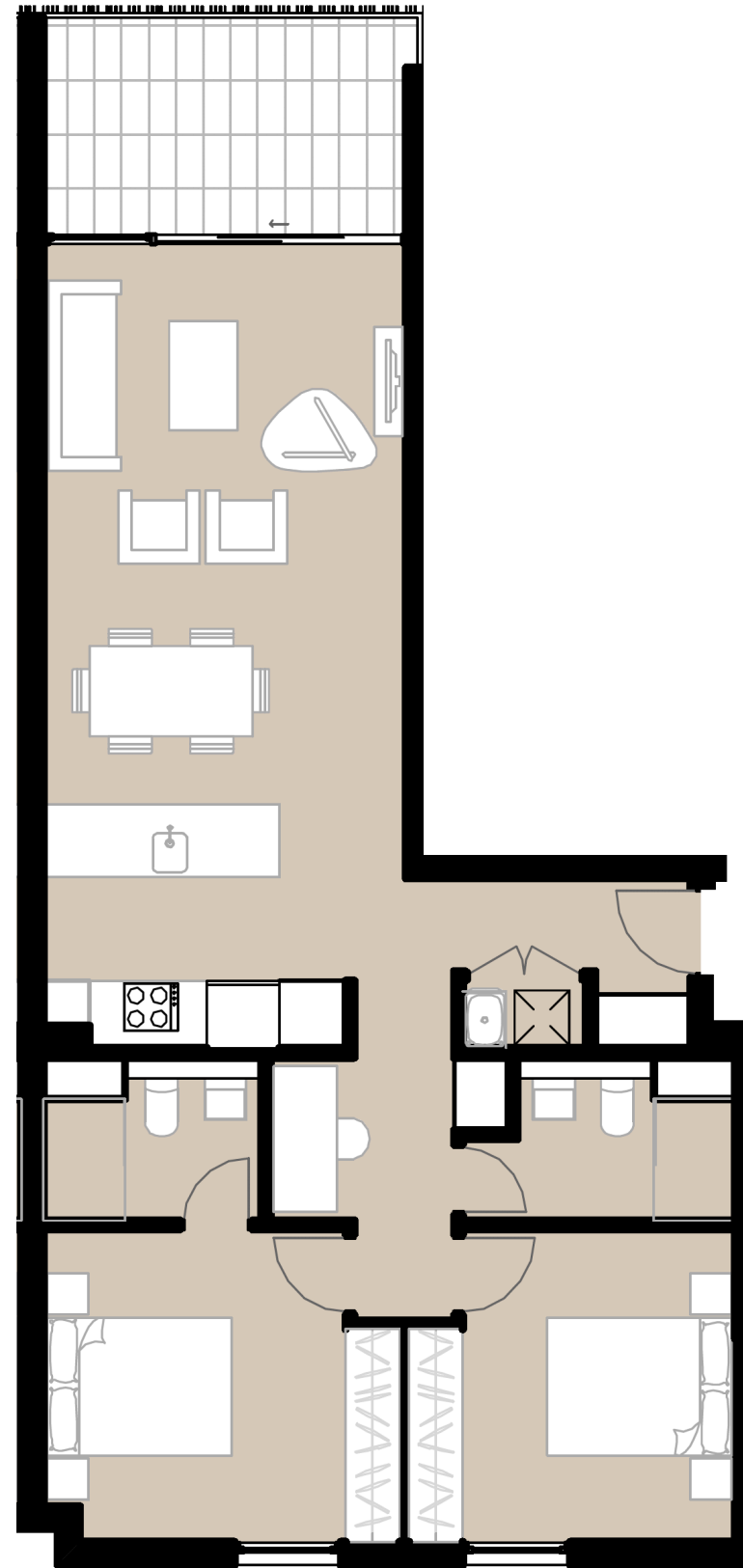


SEKISUI HOUSE

Disclaimer: These plans are intended as a guide only. The dimensions and areas are approximate only and may not accurately represent the actual dimensions and areas of the residences/car spaces or the spaces within them and are subject to change without notice. In addition, locations of utilities may vary during construction and fittings and fixtures on these plans are for illustrative purposes only. The areas are generally measured in accordance with the Property Council of Australia method of measurement. Prospective purchasers must rely on their own enquiries and should refer to the Contract of Sale and its schedules for all matters to be included in the purchase price of the residences, including plans, finishes, fixtures, fittings, appliances and other particulars of sale. Loose furniture and planters are not included. Extent of floor finishes may vary. External space and landscaping indicative only. Refer to contract elevations and plans for further clarification.

# 2 Bedroom Type 2

Min Price	Max Price
\$770,000	\$795,000



Melrose Park  
**VILLAGE**  
BY SEKISUI HOUSE

BEDROOM

2

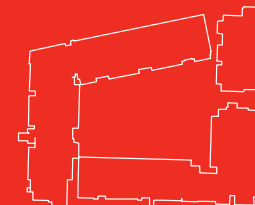
BATHROOM

2

CAR SPACES

1

INTERNAL AREA	82m <sup>2</sup>
EXTERNAL AREA	10m <sup>2</sup>
TOTAL AREA	92m <sup>2</sup>



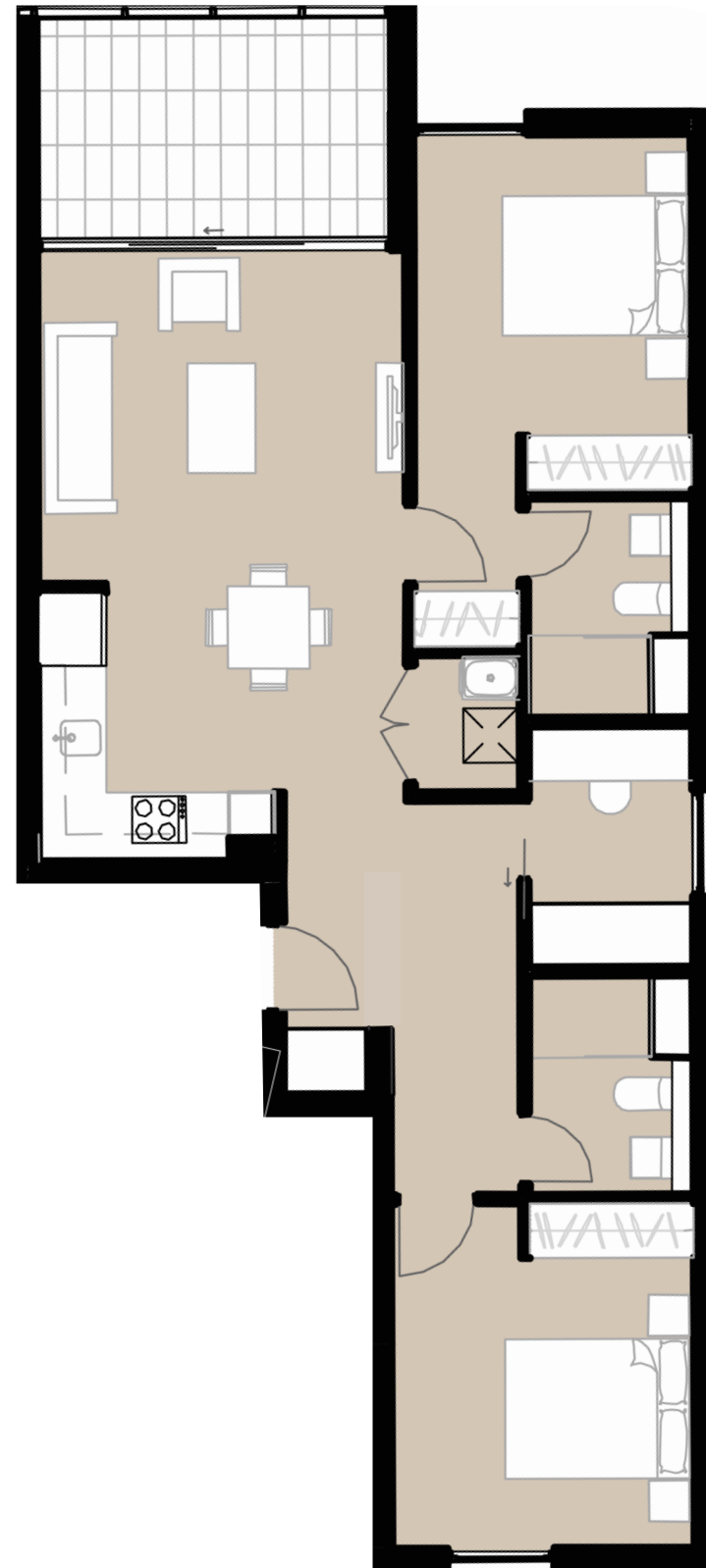
LIVE WELL AT THE VILLAGE - MELROSE PARK.COM.AU



Disclaimer: These plans are intended as a guide only. The dimensions and areas are approximate only and may not accurately represent the actual dimensions and areas of the residences/car spaces or the spaces within them and are subject to change without notice. In addition, locations of utilities may vary during construction and fittings and fixtures on these plans are for illustrative purposes only. The areas are generally measured in accordance with the Property Council of Australia method of measurement. Prospective purchasers must rely on their own enquiries and should refer to the Contract of Sale and its schedules for all matters to be included in the purchase price of the residences, including plans, finishes, fixtures, fittings, appliances and other particulars of sale. Loose furniture and planters are not included. Extent of floor finishes may vary. External space and landscaping indicative only. Refer to contract elevations and plans for further clarification.

# 2 Bedroom Type 3

Min Price	Max Price
\$785,000	\$820,000



Melrose Park  
**VILLAGE**

BY SEKISUI HOUSE

BEDROOM

2

BATHROOM

2

CAR SPACES

1

INTERNAL AREA

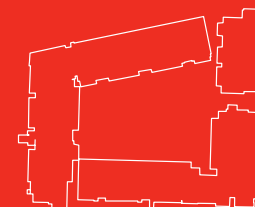
79m<sup>2</sup>

EXTERNAL AREA

9m<sup>2</sup>

TOTAL AREA

88m<sup>2</sup>



LIVE WELL AT THE VILLAGE - MELROSE PARK.COM.AU

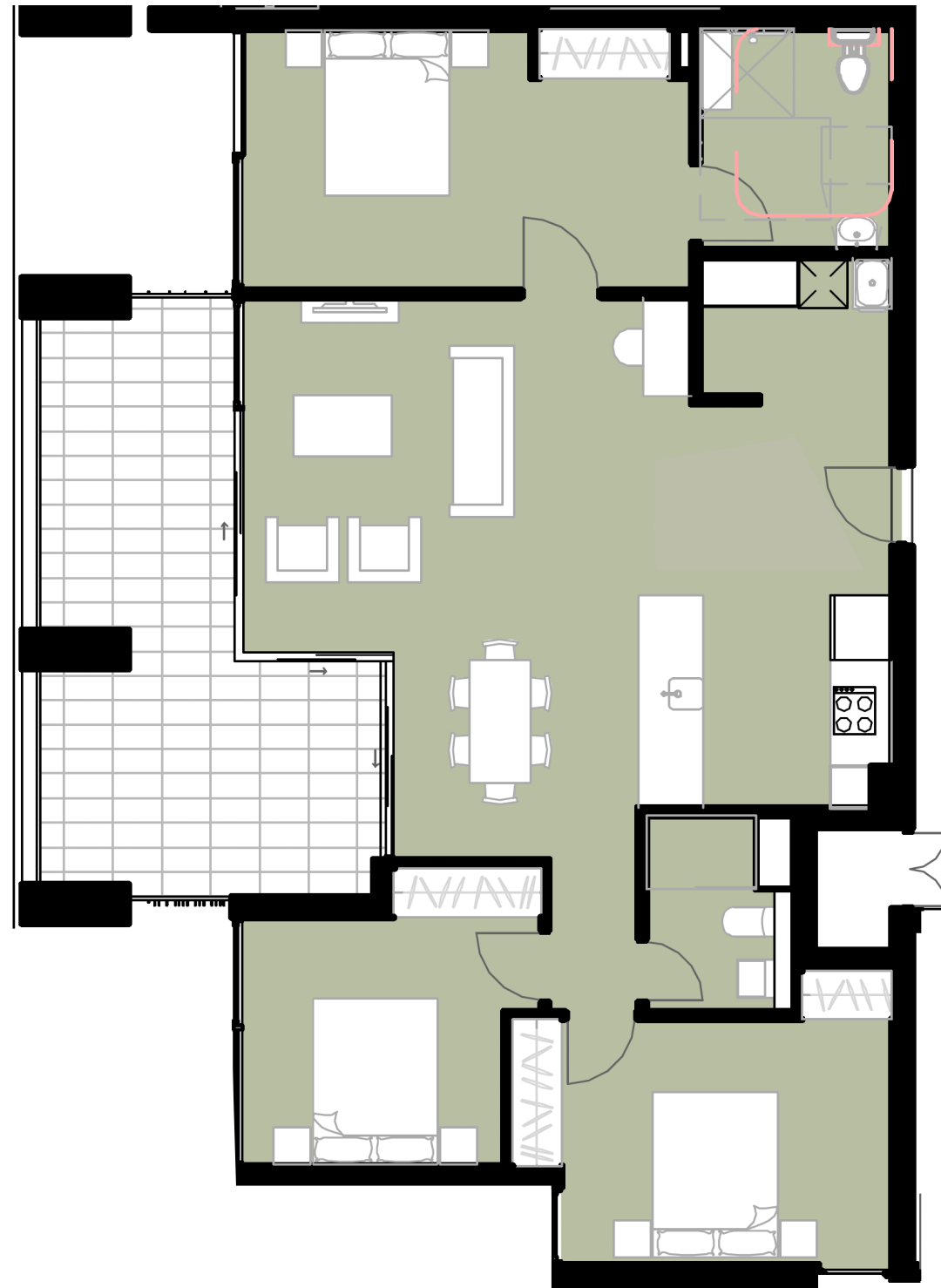


SEKISUI HOUSE

Disclaimer: These plans are intended as a guide only. The dimensions and areas are approximate only and may not accurately represent the actual dimensions and areas of the residences/car spaces or the spaces within them and are subject to change without notice. In addition, locations of utilities may vary during construction and fittings and fixtures on these plans are for illustrative purposes only. The areas are generally measured in accordance with the Property Council of Australia method of measurement. Prospective purchasers must rely on their own enquiries and should refer to the Contract of Sale and its schedules for all matters to be included in the purchase price of the residences, including plans, finishes, fixtures, fittings, appliances and other particulars of sale. Loose furniture and planters are not included. Extent of floor finishes may vary. External space and landscaping indicative only. Refer to contract elevations and plans for further clarification.

# 3 Bedroom

Min Price	Max Price
\$1,200,000	\$1,335,000



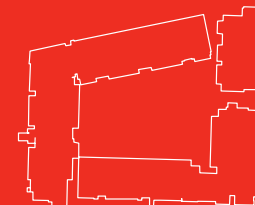
Melrose Park  
**VILLAGE**  
BY SEKISUI HOUSE

BEDROOM  
**3**

BATHROOM  
**2**

CAR SPACES  
**2**

INTERNAL AREA	106m <sup>2</sup>
EXTERNAL AREA	23m <sup>2</sup>
<b>TOTAL AREA</b>	<b>129m<sup>2</sup></b>



LIVE WELL AT THE VILLAGE - [MELROSE PARK.COM.AU](http://MELROSE PARK.COM.AU)



Disclaimer: These plans are intended as a guide only. The dimensions and areas are approximate only and may not accurately represent the actual dimensions and areas of the residences/car spaces or the spaces within them and are subject to change without notice. In addition, locations of utilities may vary during construction and fittings and fixtures on these plans are for illustrative purposes only. The areas are generally measured in accordance with the Property Council of Australia method of measurement. Prospective purchasers must rely on their own enquiries and should refer to the Contract of Sale and its schedules for all matters to be included in the purchase price of the residences, including plans, finishes, fixtures, fittings, appliances and other particulars of sale. Loose furniture and planters are not included. Extent of floor finishes may vary. External space and landscaping indicative only. Refer to contract elevations and plans for further clarification.