

A DIAMOND IN THE SKY

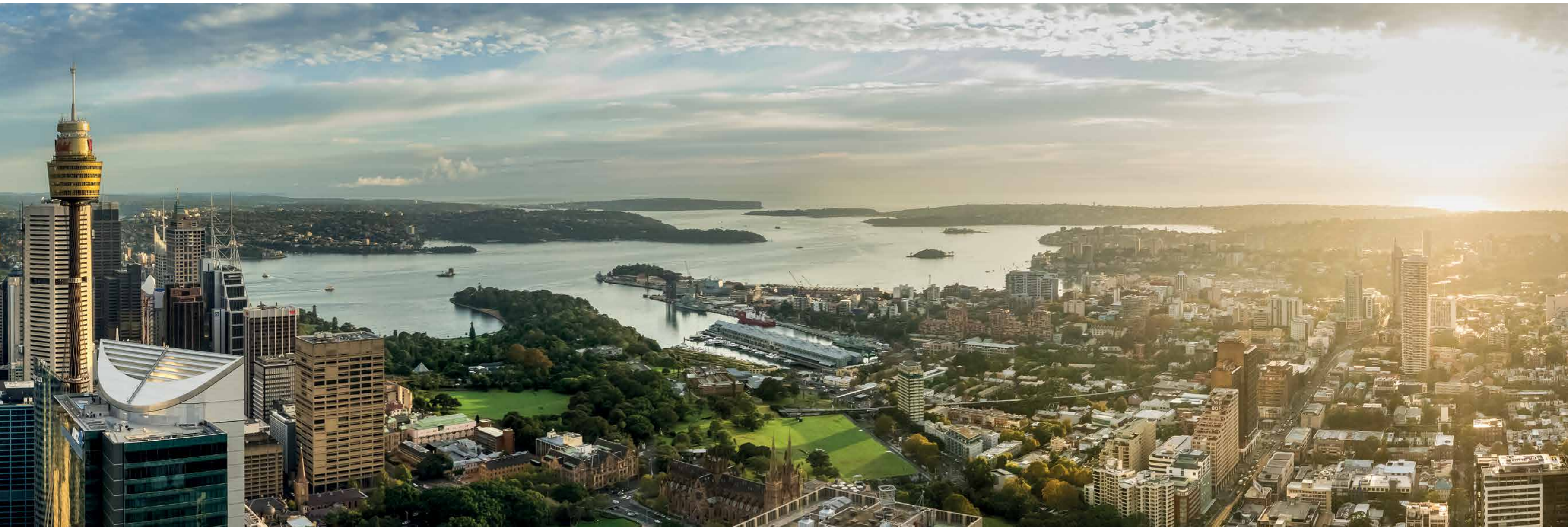


GREENLAND CENTRE
SYDNEY



Always Innovating
Greenland
AUSTRALIA

A NEW HORIZON



VIEW ON LEVEL 78


GREENLAND CENTRE
SYDNEY

A NEW WORLD-CLASS ICON IN THE CITY SKY

Greenland Centre redefines luxury super high-rise living in Australia, combining triumphant architecture with exceptional design.

This masterpiece tower began with a clear intent – to be the finest residential building ever created in the heart of Sydney. From the remarkable splendour of its mesmerising Sydney Harbour views to the extravagance of its finishes, every aspect is incomparable.

Breathtaking by day, luminous by night, Greenland Centre's residences are simply extraordinary. Beautifully designed and crafted to deliver maximum luxury, only a privileged few will have the distinction of calling this iconic building their home.



Rising high
above the
most beautiful
harbour city
in the world,
Greenland
Centre is a
towering icon
on the Sydney
skyline.

As one of Sydney's tallest residential towers, Greenland Centre makes a monumental statement of architectural excellence. Its ground-breaking design and awe-inspiring height offer a level of luxury, comfort and grandeur like no other.

Inspired by its position in the heart of Sydney, Greenland Centre is a beacon of design that commands attention in one of the world's premier cities.

Its creators are amongst the most talented names in architecture and design today, and from inception, they sought to create a towering landmark of luxury and style.

The result is a uniquely recognisable architectural tribute to the most celebrated harbour city in the world.



01.
THE
RESIDENCES

HEART OF THE HOME

LUXURY TAKEN TO ANOTHER LEVEL

Greenland Centre's residences are without peer.

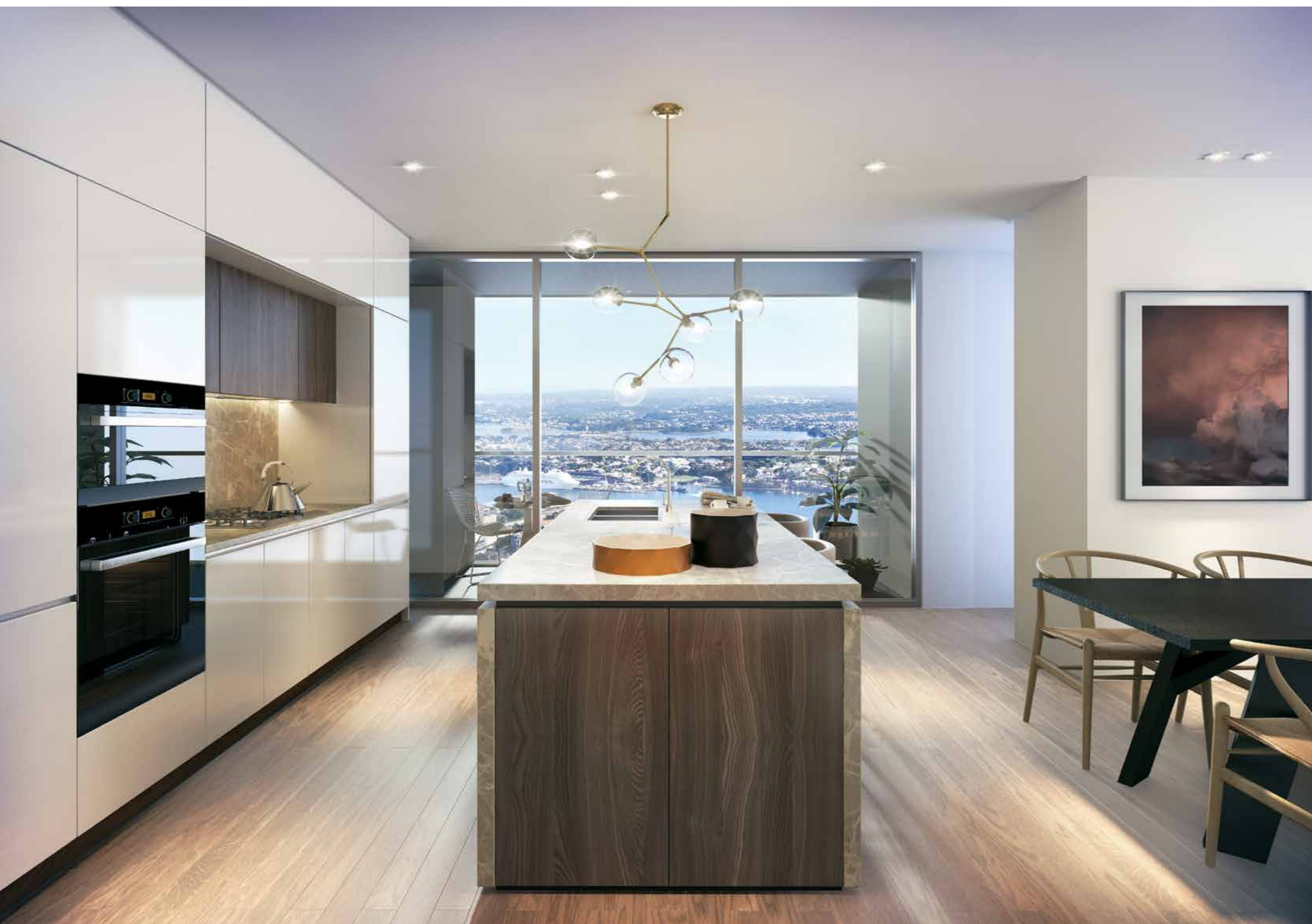
From their epic heights, they take in the sapphire blue of Sydney Harbour stretching all the way to the distant ocean headlands, and the shimmering cityscape as far as the Blue Mountains.

Each residence feels like an extension of the views – a sensational sky-high retreat offering a breathtaking flow of private, bespoke luxury.

The architecture, the interiors, and the extraordinary cultural riches that radiate from your doorstep are seamlessly in tune.



EFFORTLESS GLAMOUR



Light-filled spaces featuring beautiful timbers and plush carpeting give Greenland Centre's apartments a feeling of warmth and comfort. Every element is carefully considered, with four luxurious finishing schemes – Pearl, Topaz, Ruby and Opal – providing the perfect palette to which you can add your personal touch.

Beautifully-appointed kitchens fitted with Miele appliances create ideal spaces in which to entertain. With exquisite marble, diamond-shaped tiles and high-quality timber floors, these kitchens are a haven of style and simplicity.

Meanwhile, bathrooms featuring frameless glass showers and designer lighting ensure you'll always feel that touch of comfort. Luxuriously layered finishes give these spaces a minimalistic yet indulgent feel.



THE SYDNEY BALCONY

A DESIGN REVOLUTION

True indoor-outdoor living

Unique super high-rise design

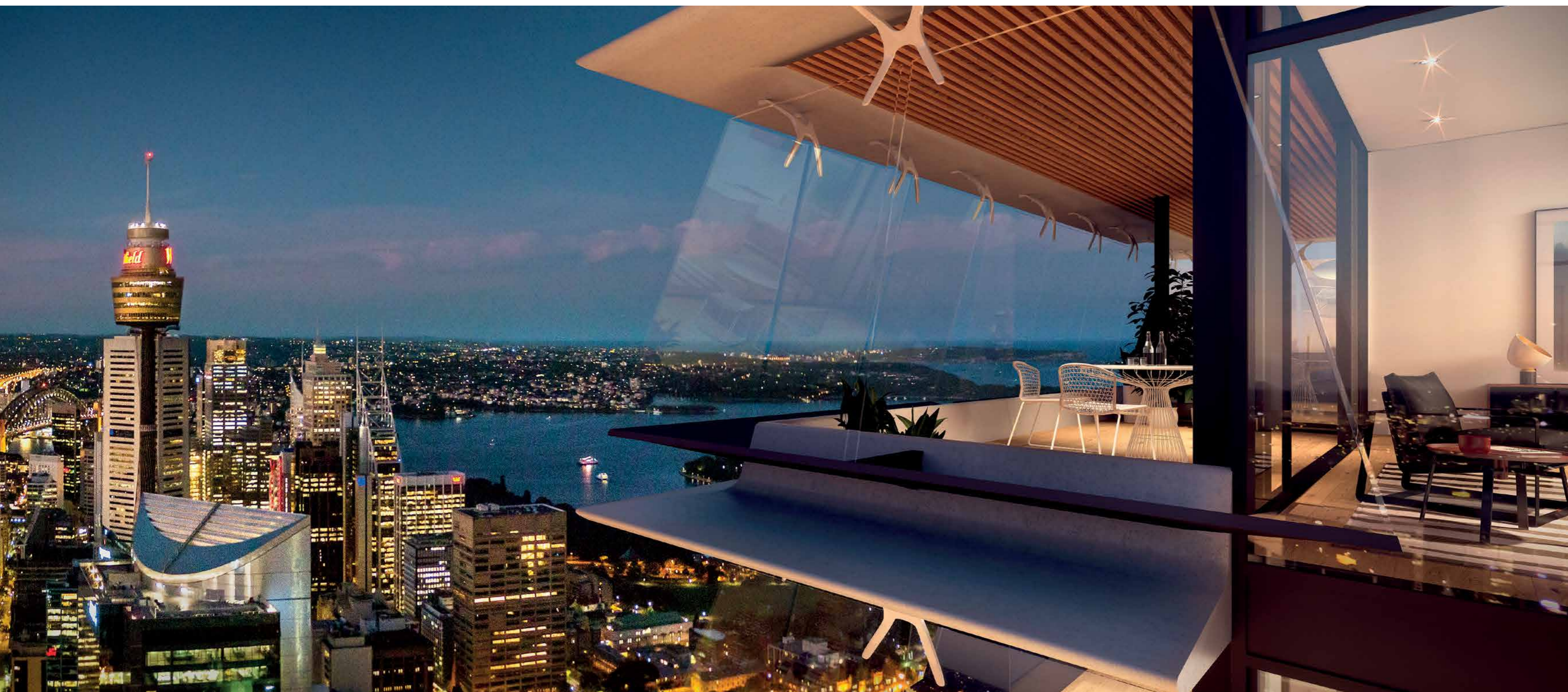
Unimpeded views

A Sydney "first"

Greenland Centre's unique and revolutionary Sydney Balconies allow you to enjoy true indoor-outdoor connections from a super high-rise setting.

Veiled in glass, these sensational sheltered spaces draw the sweeping vistas into the heart of the living areas and many bedrooms. Their remarkable design adds a truly special dimension to these exceptional residences.

Use them as an extension of your living areas, or a retreat from the bustle of city life. Their innovative 'open air' design means you can experience gentle, natural breezes along with magnificent multidirectional views.





A FRESH VIEW ON OUTDOOR LIVING

A sanctuary to calm a mind made busy by city living, your 'Sydney Balcony' merges inside and outside so that the views, reflections and your interiors read as one giant space.

The pared-down luxury of these elegant outdoor spaces is the perfect foil for the energy and pace of the city, effortlessly capturing Sydney's easy moods.



02.
THE
DIAMOND
COLLECTION

LUXURY LIVES HERE

- Luxury penthouses
- Landmark Sydney views
- Opulent interiors
- Six-star living

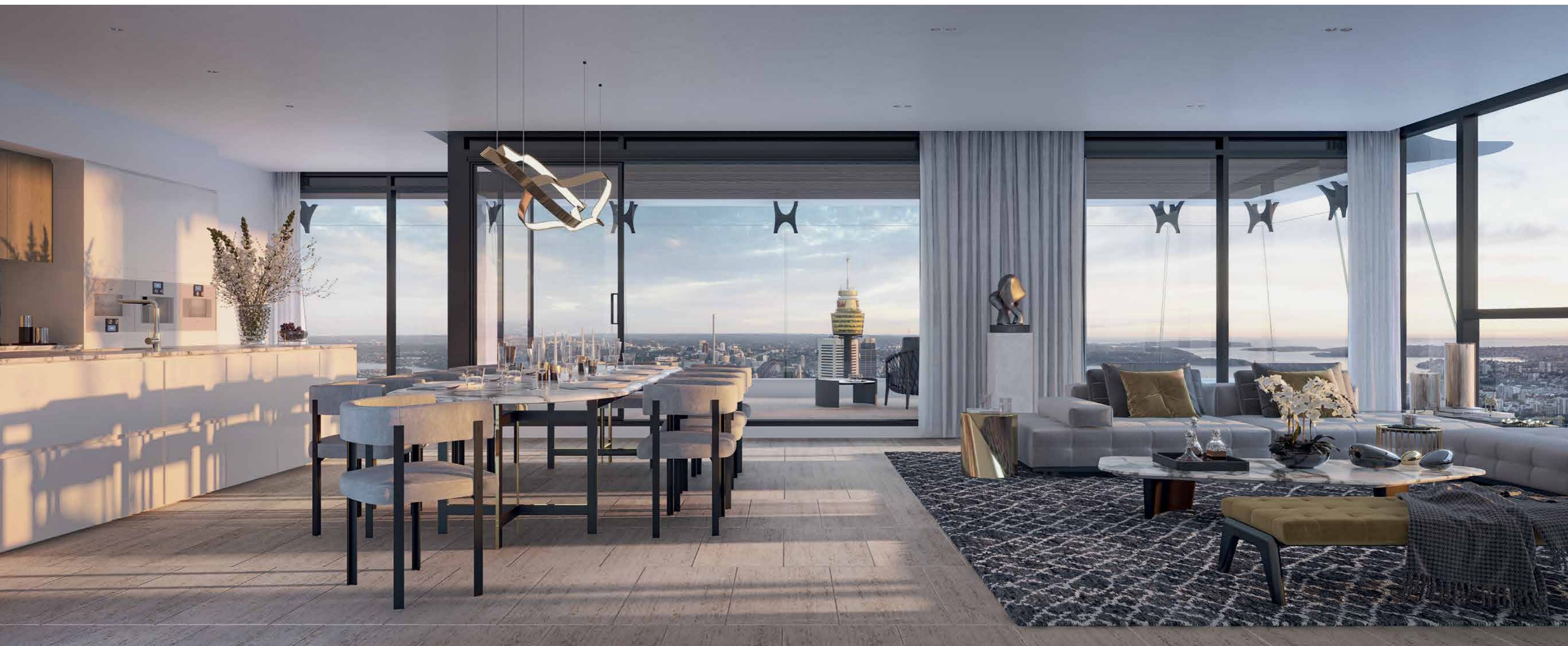
At Greenland Centre's crown, nine exquisite penthouses provide some of Sydney's finest residential lifestyles. With panoramic views and opulent living spaces, penthouse living has never looked better.

The penthouse collection impresses on every level, with beautifully-crafted residences overlooking the Sydney skyline and harbour. Featuring free-flowing indoor-outdoor spaces that invite the extensive views into the living areas, you'll truly feel a part of this world-class city.

Boasting the finest fixtures and fittings including stone tiled flooring, kitchens with Gaggenau appliances and elegant bathrooms with a free-standing bath.

Selected and crafted with the utmost care, these penthouses are designed as beautifully exclusive spaces, and sky-high living rooms create a sanctuary from the world below, allowing you to rest and relax in pure comfort.







03.
THE KING
PENTHOUSE

A CUT ABOVE

The King Penthouse is Greenland Centre's crowning jewel, majestic in both scale and its endless views.

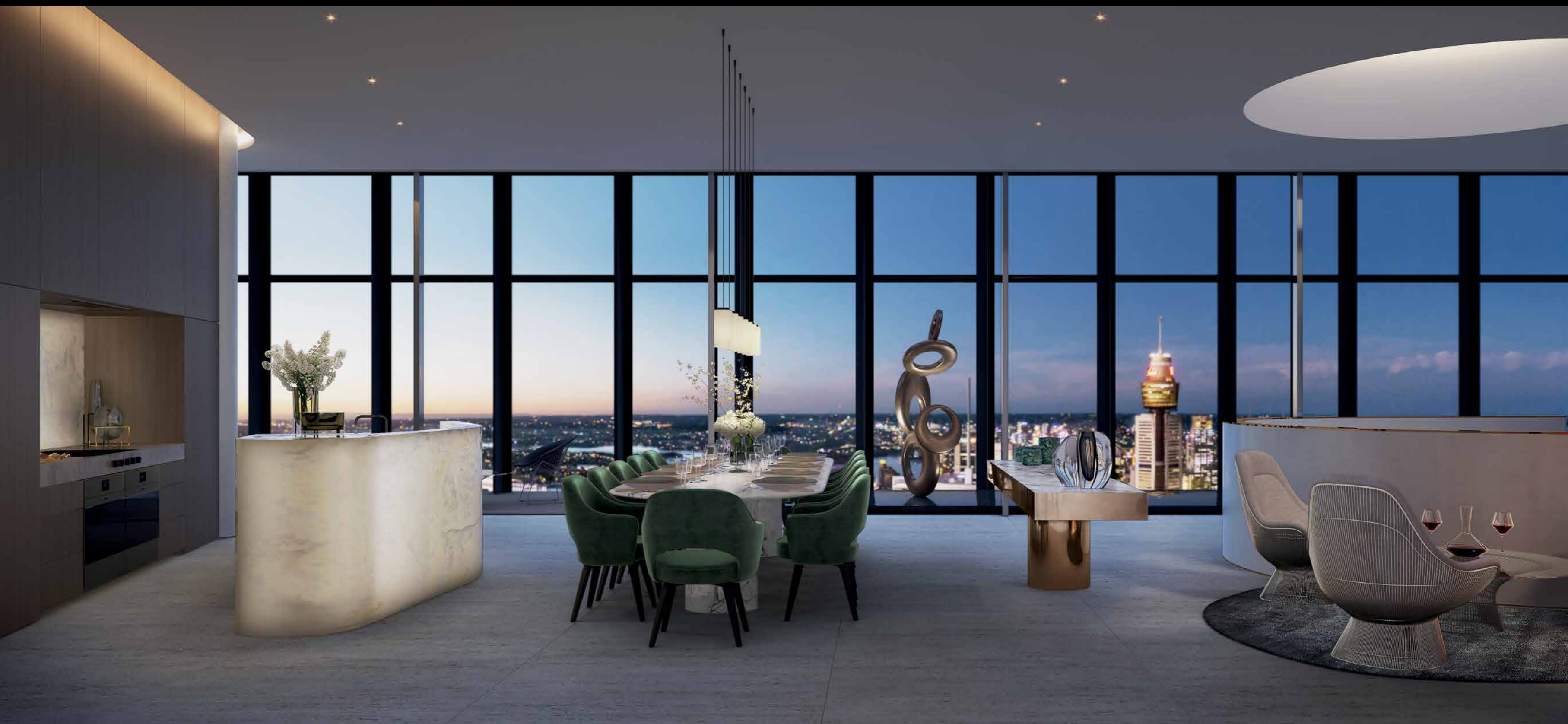
Designed for the truly discerning, The King Penthouse is an ultra-residence, inspired by those found in the greatest global cities of New York and London. It possesses all the elements and exclusive luxury features one would expect in a world-class penthouse home.

Expansive spaces are accentuated by rare, beautiful and authentic natural materials. Every aspect underlines its status at the very pinnacle of the tower – from its luminous architecture to the immense luxury of its interiors.

A personal 'sky garden' – complete with spa, outdoor kitchen and lush landscaping – provides the perfect sanctuary.

Welcome to The King Penthouse – the most iconic and memorable penthouse ever created in Sydney's landmark CBD.







The King Penthouse's luxuriously finished living spaces provide unrivalled vistas over the iconic Sydney Harbour and CBD, while the expansive master bedroom features views over Barangaroo and Darling Harbour to the Blue Mountains.

Overscaled spaces create an atmosphere that showcases the breathtaking views and the enduring quality of the materials. The simple, calm and spacious rooms exude elegance and tranquillity.

Every room tells a story. One where architecture, design and finish are in perfect harmony.

TOP CLASS AMENITIES

30-metre outdoor pool

Gym, sauna and spa

Multi-function and
reading rooms

Stunning outdoor sundeck

In the city's heart, this is your private oasis. It promises unforgettable six-star living experiences.

Relax in the waters of the 30-metre outdoor pool, which is flooded with inviting northern light. Then, pamper mind and body in the steam room, sauna and spa, or enjoy a workout in the private gymnasium.

Meanwhile, Greenland Centre's podium level offers an exclusive Zen-like retreat from the bustling city. It fuses the essential elements of life – sky, air, water and luxurious sanctuary – to make nurturing and wellbeing an essential part of your day.

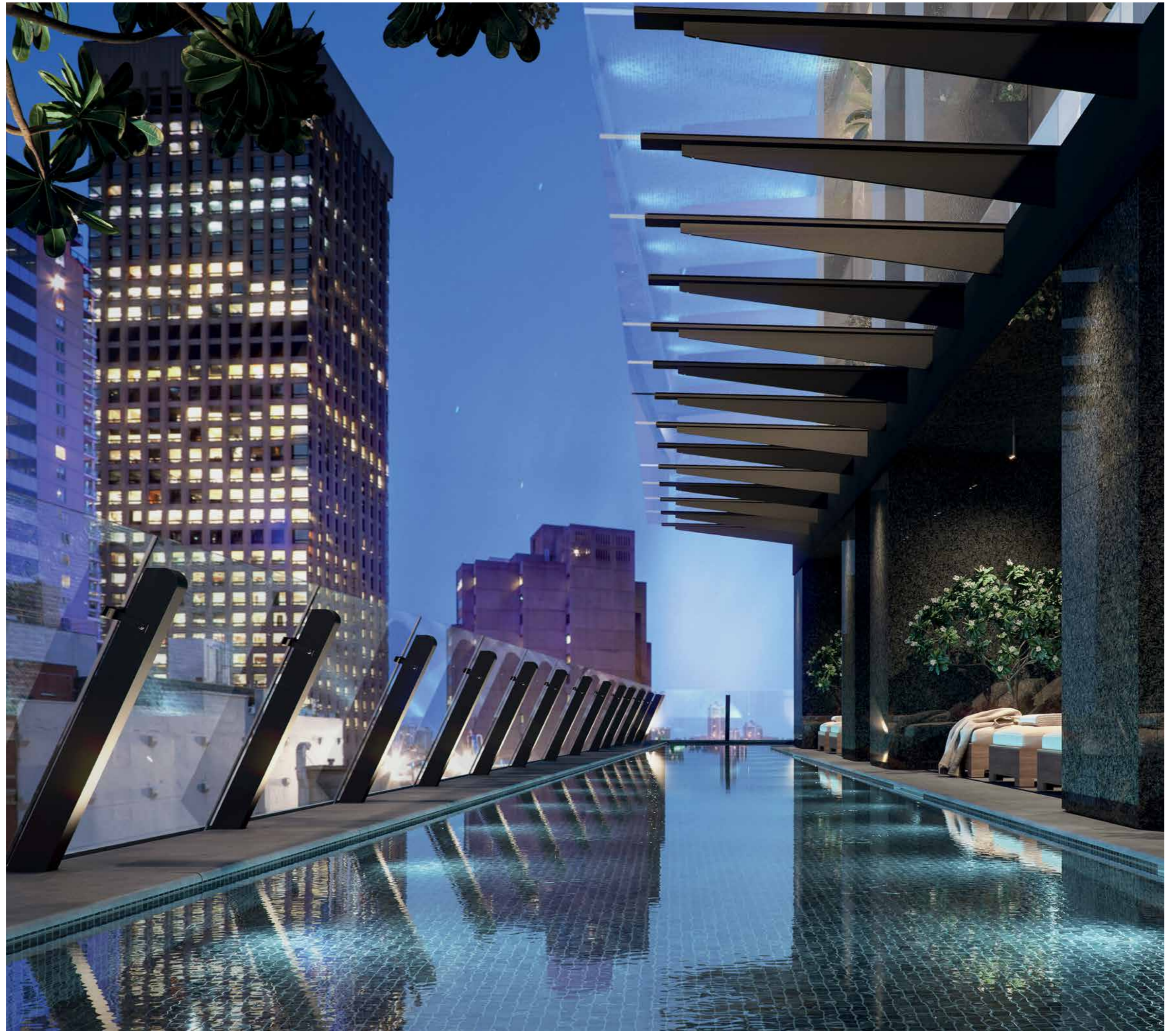
Ground floor

The Greenland Centre experience begins on arrival in your exclusive residential lobby, where you will be greeted by a private concierge, ready to assist with your day-to-day needs.

A curated selection of ground-floor retail will provide you with essential dining and shopping options, while a five-storey 'creative hub' will feature dance, theatre, music, film and visual arts facilities.

Adding to Greenland Centre's worldly appeal, the boutique Primus Hotel borders the tower at street level, providing stylish alternative venues for residents close by and an ideal base for visiting family and friends.

Renowned as a wonderful conversion of an outstanding heritage-listed building, Primus Hotel is considered amongst the finest examples of Art Deco design in Australia.





CITY LIFE

Day or night, Sydney shines with a lifestyle that is the envy of the world. It is an international centre of business that pairs towering skyscrapers and prestige stores with magnificent harbour and city parks, sleek luxury yachts and breathtaking vistas.

Catch your breath in the green of Hyde Park. Stroll to the boutiques, global luxury brands, department stores and Westfield's flagship shopping.

For lovers of fine food, the CBD's stylish restaurants host a roll call of Sydney's top chefs while this city's grandest monuments – the Australian Museum, Art Gallery of NSW and Sydney Opera House – lie moments from your door.



YOUR INNER CITY HEARTLAND



**FIFTEEN
MINUTES TO
SYDNEY'S
SPARKLING
HARBOUR**

Sydney Harbour has long been the liquid blue heart of the city, acting as a magnet for locals and tourists alike. With its exhilarating mix of dining experiences, cultural icons and natural beauty, a spot by the water's edge is the place to be. Only a short distance from Greenland Centre, you can explore the harbour's coves and sweeping foreshore parks, set sail across its sheltered waters, or settle in for a night at the Sydney Opera House.



SYDNEY'S CELEBRATED DINING SCENE

From grand occasion dining by the water to stylish brasseries and Asian fusion menus, the city's finest dining and casual feasting experiences are found in heritage buildings, down laneways and on the harbour. From the definitive dining of Glass Brasserie, to the handsome Bambini Trust Café and the Strand Arcade's The Restaurant Pendolino, Sydney's sophisticated dining experiences are on every global foodie's map.



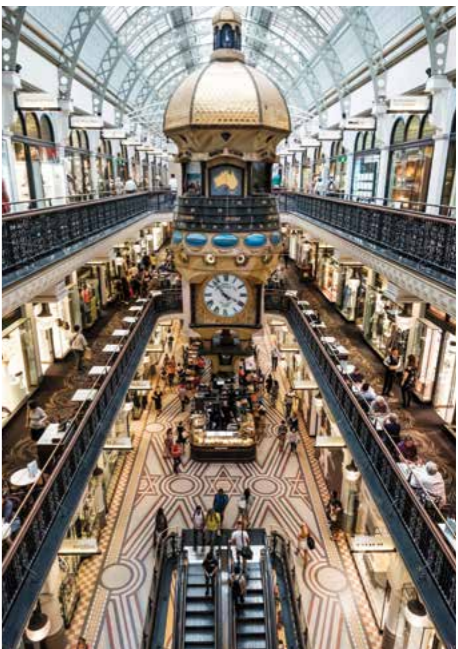
AN OASIS OF GREEN

Nearby, beautiful Hyde Park and the sprawling Royal Botanic Gardens provide a green oasis and wonderful places to stroll in the heart of the CBD, or perhaps exercise against the backdrop of the harbour. Cycle along the winding paths or pause a while under the towering figs on your way to or from the city and foreshore.



LUXURY RETAIL EXPERIENCES

International luxury brands, local labels and grand European fashion houses are moments away – from Chanel, Hermès and Louis Vuitton, to Gucci, Tom Ford and Prada. Peruse the chic boutiques in the historic Strand Arcade, shop under the grand domes of the stately QVB or immerse yourself in the high-octane retail of Westfield.



SYDNEY'S FINEST

THE HEART OF STYLE

In the heart of an international city, every ingredient for a beautiful life lies on your doorstep – celebrated dining, elegant CBD bars and fashionable stores. It is an address to savour, enriched by the best that Sydney has to offer.



DARLING HARBOUR

A ten-minute stroll takes you to glittering Darling Harbour, one of Sydney's great celebration spaces. This dynamic waterside pocket is home to world-class dining, waterside bars and major entertainment and cultural institutions. Head to Cockle Bay, King Street Wharf and Harbourside to dine by the water or check out the new foodie precinct including Steam Mill Lane for more casual fare.



GEORGE STREET

A bold new vision for George Street is revitalising the heart of Sydney as new light rail is creating space for vibrant open-air dining, more city trees and pedestrian boulevards. The transformation of George Street into a vehicle-free zone has cemented Sydney's status as a world-class retail destination, while bringing new life to the CBD and harbour precinct.



NEW LIFE AND CULTURE

The people of Sydney are enjoying a CBD renaissance – from the globally-renowned Vivid festival, to the expanded Museum of Contemporary Art, the transformed George Street and the revival of the city's laneways. At Greenland Centre, you're at the heart of it all.



THE DEVELOPER

Greenland Australia

Founded in Shanghai, China in 1992, Greenland Group has the distinction of being recognised as a Fortune Global 500 company for nine consecutive years. Greenland Group manages projects in over 100 cities in nine countries, including Australia, USA, Canada, UK, Germany, Japan, South Korea and Malaysia.

The Australian arm of the business, Greenland Australia, is based in Sydney and since its establishment in 2013, has become known as one of the country's leading developers of residential communities. Greenland Australia leverages its parent company's extensive international track record, commitment to design innovation, quality and efficiency, in combination with its local market expertise, to develop distinctive residential projects.

In addition to this flagship 'Greenland Centre Sydney' project, the company is also developing 'Park Sydney' in Erskineville. Completed projects include its landmark 'Omnia' project in Potts Point, 'Primus Hotel Sydney', 'Lucent North Sydney', 'Leichhardt Green' and 'nbh at Lachlan's Line' in Macquarie Park.



THE BUILDER

Probuild

Probuild is one of Australia's largest and most successful Tier 1 construction companies. Currently, Probuild employs over 1,000 people across the country and manages an annual turnover of more than \$2 billion, with work in hand valued at over \$3.5 billion.

Probuild is a national leader in large-scale residential projects, and has over 5,000 apartments currently under construction across the country. Probuild provides an end-to-end service, encompassing all facets of project delivery, construction planning, and management.

With their extensive and successful history, developers and clients alike entrust Probuild to deliver quality large-scale residential and multi-use buildings.

For 30 years and counting, Probuild has delivered major projects for clients nationwide including Aurora Melbourne Central, The Towers and Ritz Carlton at Elizabeth Quay and every major retail stage of Chadstone Shopping Centre.



THE ARCHITECT

BVN

BVN brings a Sydney residential sensibility to Greenland Centre, informed by a pedigree of innovative, award-winning design.

Using the beauty of Sydney as inspiration, BVN's design for Greenland Centre takes its cues from the city's natural attributes – the sun, the glorious harbour views, the energy of the CBD and the unique skyline. To the east, harbour and distant ocean views predominate, while to the west, vistas stretch from Darling Harbour to the Blue Mountains.

Meanwhile, the tower's north-facing balconies will bring a memorable experience – timber decks, filtered sunlight and cooling breezes will make living in these remarkable apartments a truly Sydney and Australian experience.



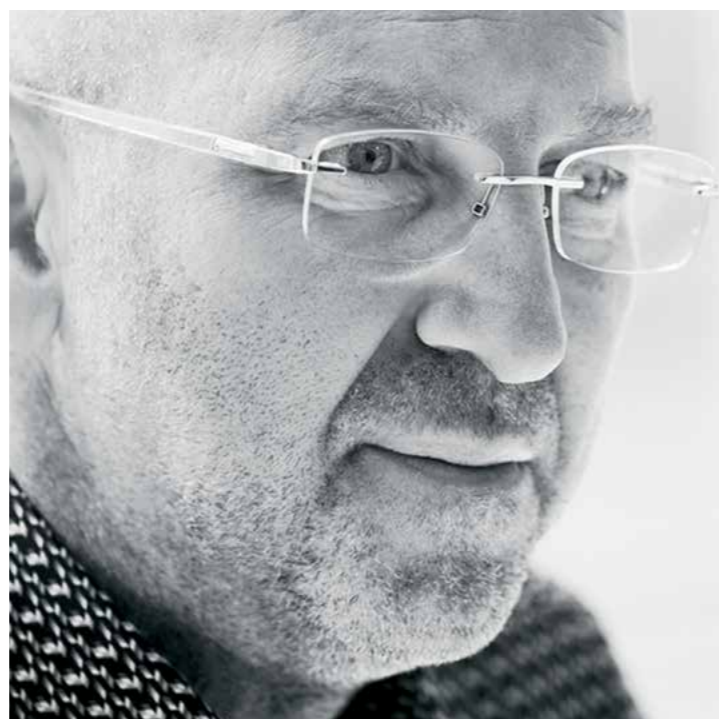
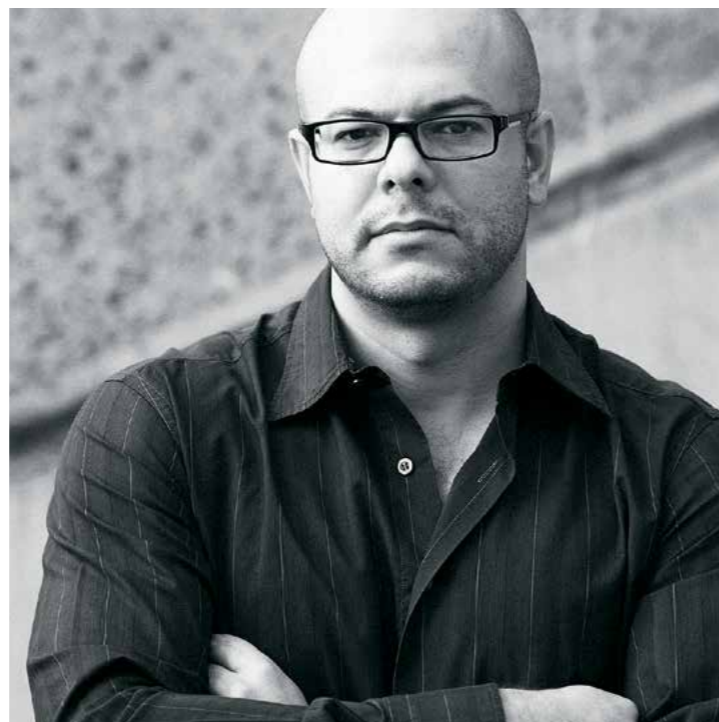
THE INTERIORS

Woods Bagot (Greenland Centre)

Global design director Domenic Alvaro and chief executive officer Nik Karalis from Woods Bagot bring a unique mix of global and local sensibility to their celebrated architecture and interiors.

Architecture for residential living is about creating living spaces that are timeless – spaces that reflect the needs of modern living and local culture. Each experience must be unique, with Sydney providing the inspiration for this residential tower that encompasses the best in lifestyle to shape our lives, aspirations and personal experiences.

Woods Bagot brings its extensive, award-winning residential design experience from around the world to these outstanding apartments.



David Selden Design (The King Penthouse)

David Selden Design was established in 2004 as a multi-disciplinary design and architectural practice.

The company's projects are primarily high-end private residences along with commercial, retail and hospitality projects.

A practice of highly-trained and experienced interior designers and architects, David Selden Design brings life to the King Penthouse interiors, ensuring the absolute highest level of detailed design resolution.





GREENLAND CENTRE
SYDNEY



Disclaimer: The information, images and illustrations in this brochure are indicative only and subject to change. Computer generated images and renderings have been provided for the purpose of alternative styling and possible views from or of certain apartments. No warranty can be provided as to the views from any specific apartment. The particulars are set out as a general outline for the guidance of intending purchasers and do not constitute an offer or form part of any offer or contract. All descriptions, dimensions, references to conditions and necessary permutations for use and other details are given in good faith and are believed to be correct, but do not consider the specific objectives, situations or needs of any particular intending purchaser. Any intending purchasers should not rely on them as a promise, warranty or statements or representations of fact, but must satisfy themselves by inspection or otherwise to the correctness of each item, and where necessary seek appropriate professional advice. No third party supplier or their agents has any authority to make or give any promise, representations or warranty in relation to this property.

FOR ENQUIRIES
GREENLANDCENTRE.COM.AU